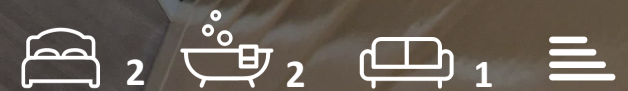




Flat 2 55 Christchurch Road  
, Bournemouth, BH1 3PA

**£1,395 Per month**



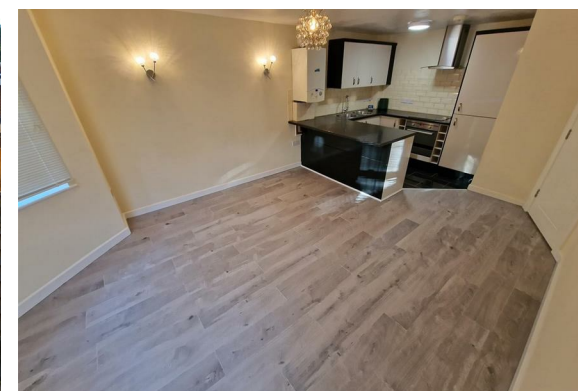
## Flat 2 55 Christchurch Road

, Bournemouth, BH1 3PA

Modern proposed built ground floor two bedroom flat with two bathrooms. The flat is offered unfurnished or furnished. Boosts a large open-plan kitchen lounge area. there is two rooms, one Double bedroom with French windows to the communal patio and one en-suite double master bedroom with a single uPVC door to the backyard area. The flat has laminated floor boards throughout and gas central heating. Car parking is available first come first serve. Suitable for sharers or families alike.

EPC rate: 79 | C

Council Tax: B





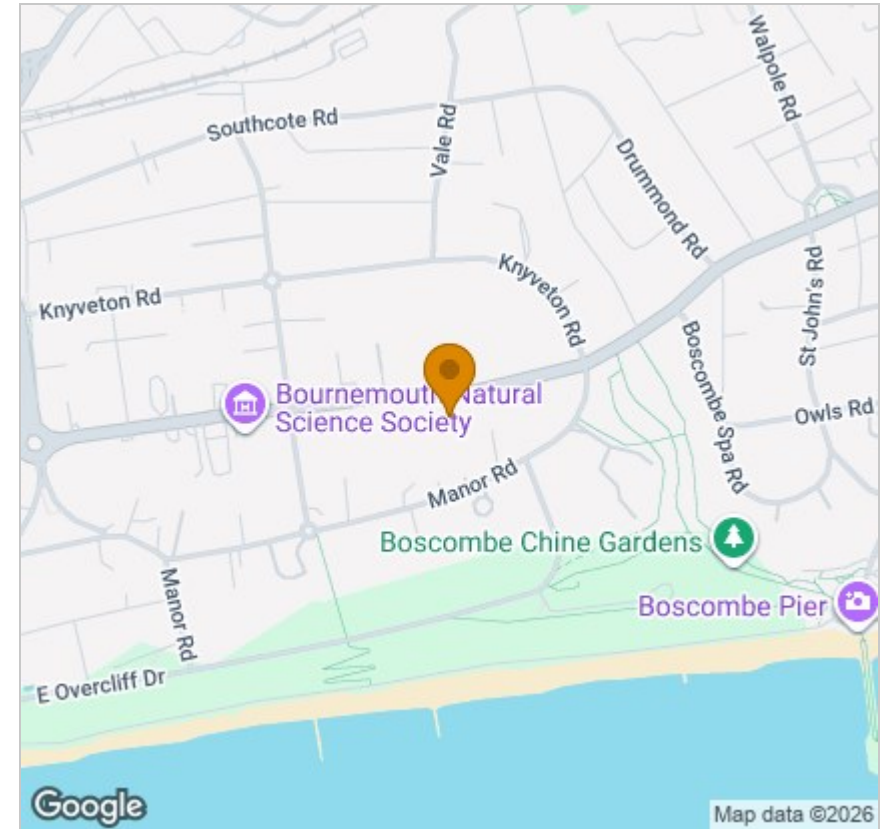
## Floor Plan



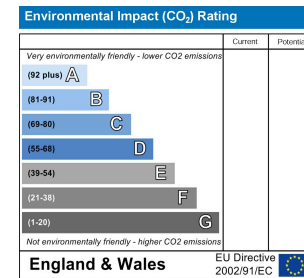
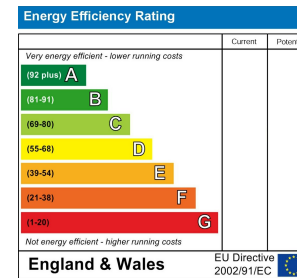
## Viewing

Please contact our Fully Managed Properties Office on if you wish to arrange a viewing appointment for this property or require further information.

## Area Map



## Energy Efficiency Graph



These particulars, whilst believed to be accurate are set out as a general outline only for guidance and do not constitute any part of an offer or contract. Intending purchasers should not rely on them as statements of representation of fact, but must satisfy themselves by inspection or otherwise as to their accuracy. No person in this firm's employment has the authority to make or give any representation or warranty in respect of the property.